

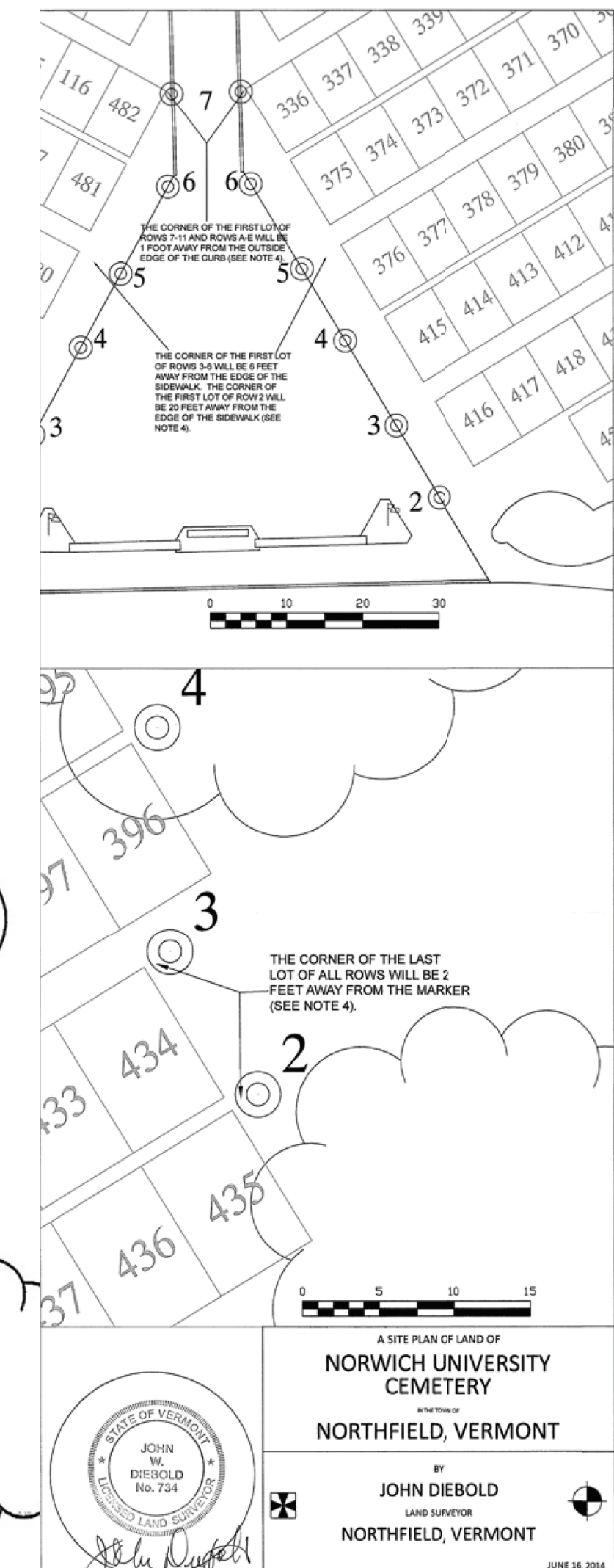
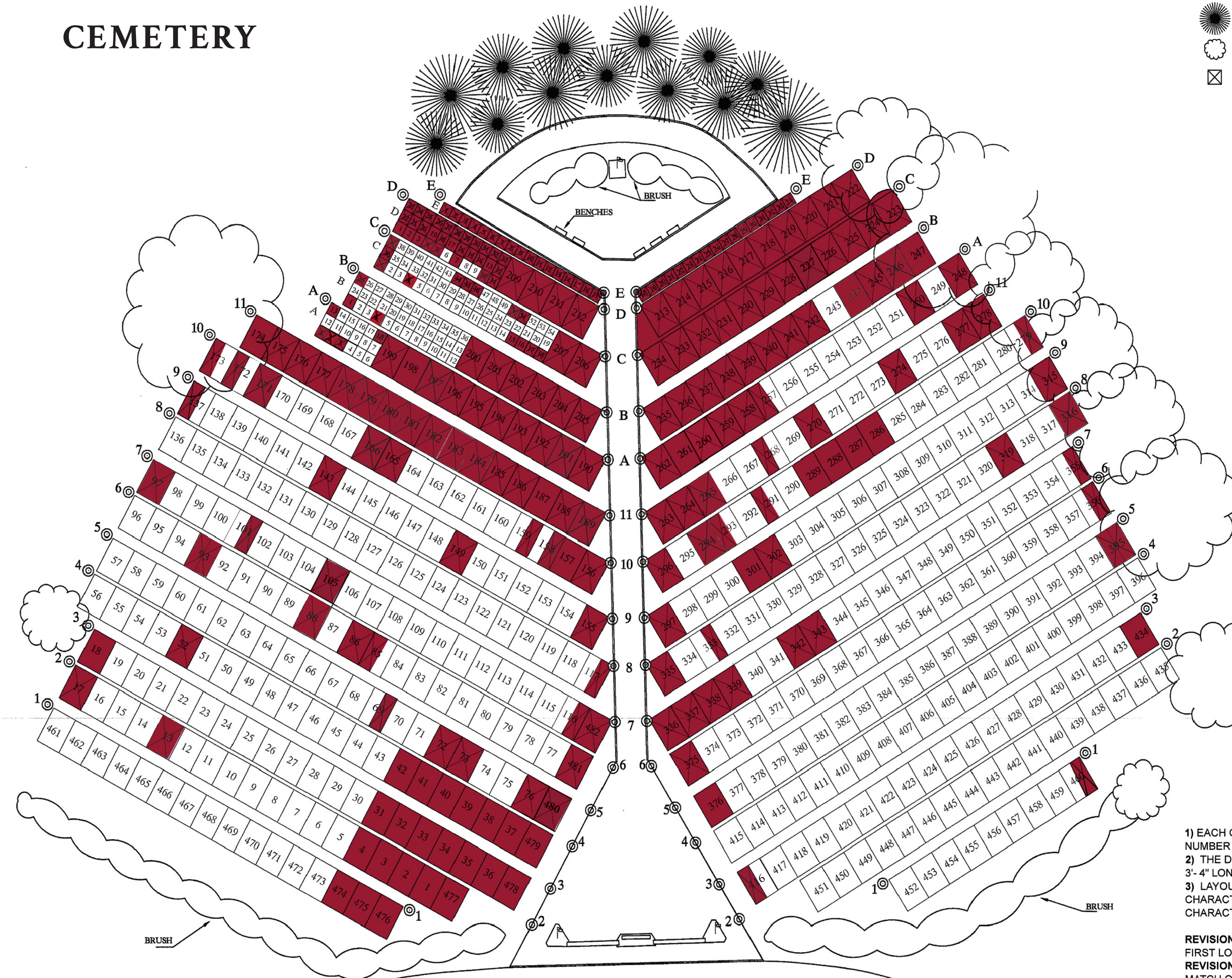


NORWICH
UNIVERSITY

CEMETERY

LEGEND

- ⊙ MARKER
- 🚩 FLAG POLE
- 🌲 CONIFEROUS TREE
- ☁️ DECIDUOUS TREE
- ⊠ CONTROL POINT



NOTES

- 1) EACH GRAVE SITE IS 3'-6" WIDE BY 10' LONG. EACH NUMBER LOT CONTAINS 2 GRAVE SITES.
- 2) THE DIMENSIONS OF THE CREMAIN LOTS ARE 3' WIDE BY 3'-4" LONG.
- 3) LAYOUT ROWS USING A TIE LINE FROM TOP OF CHARACTER NEAREST WALKWAY CURBING TO TOP OF CHARACTER ON GRANITE MARKERS AT END OF ROW.

REVISION 7/9/2014: CORRECTED DISTANCE TO CORNER OF FIRST LOT OF ROW O FROM MARKER TO 20'.
REVISION 10/10/2014: CHANGED ROW DESIGNATION TO MATCH ORIGINAL DESIGN. ADDED NOTE 4.
REVISION 11/21/2014: REMOVED NOTE 4 ABOUT PROPOSED WELL TILE.